

French Blue - Introduction

by Nan Baker

French Blue is a smokey, grey blue often associated with the cloth used for French infantrymen in the 19th century, using rare indigo dye. This new pattern by Nan Baker allows you to use your quilting skills to make your own vision in blue.

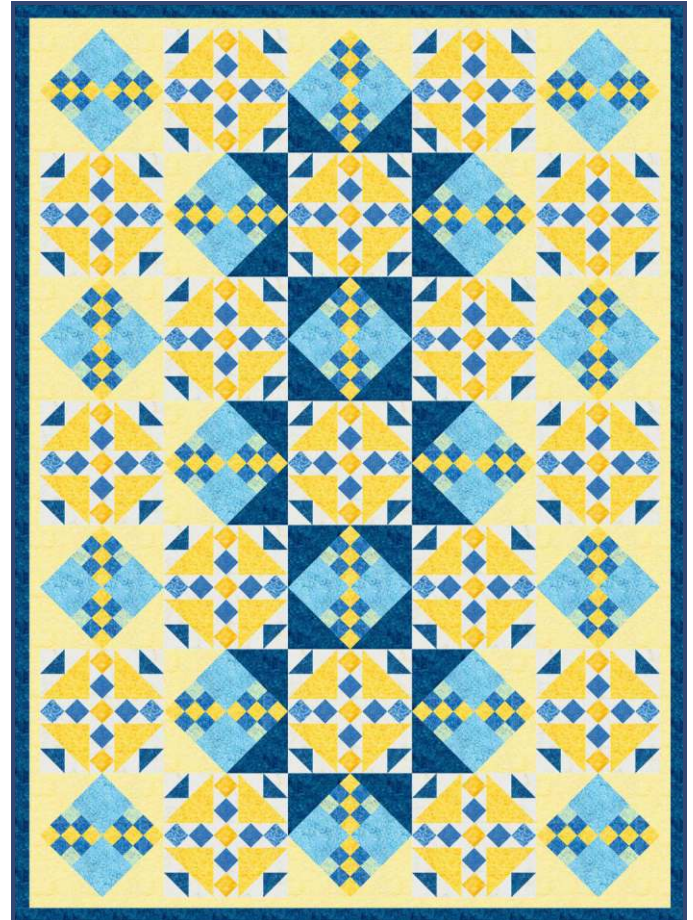
Be sure to join us in the **French Blue** group on www.needlespot.com, a private online needle arts enthusiast community, there, you can get answers to any questions you might have, share your progress, and see what others are doing.

— TQPM

Materials List

All cuts based on usable 40" wide, prewashed 100% cotton fabrics

- 2-1/2 yds Fabric A (white in sample)
- 2 yds Fabric B (yellow in sample)
- 3/8 yd Fabric C (pale blue in sample)
- 1 yd Fabric D (medium blue in sample)
- 1-5/8 yd Fabric E (dark blue in sample)
- 3/8 yd Fabric F (pale green in sample)
- 7/8 yd Fabric G (turquoise in sample)
- 1-1/2 yd Fabric H (pale yellow in sample)
- 3/4 yd binding fabric
- 6-1/4 yds backing fabric
- 75" x 101" piece of batting
- Quart-sized plastic zipper bags (about 5)



67-1/2" x 92-1/2"

